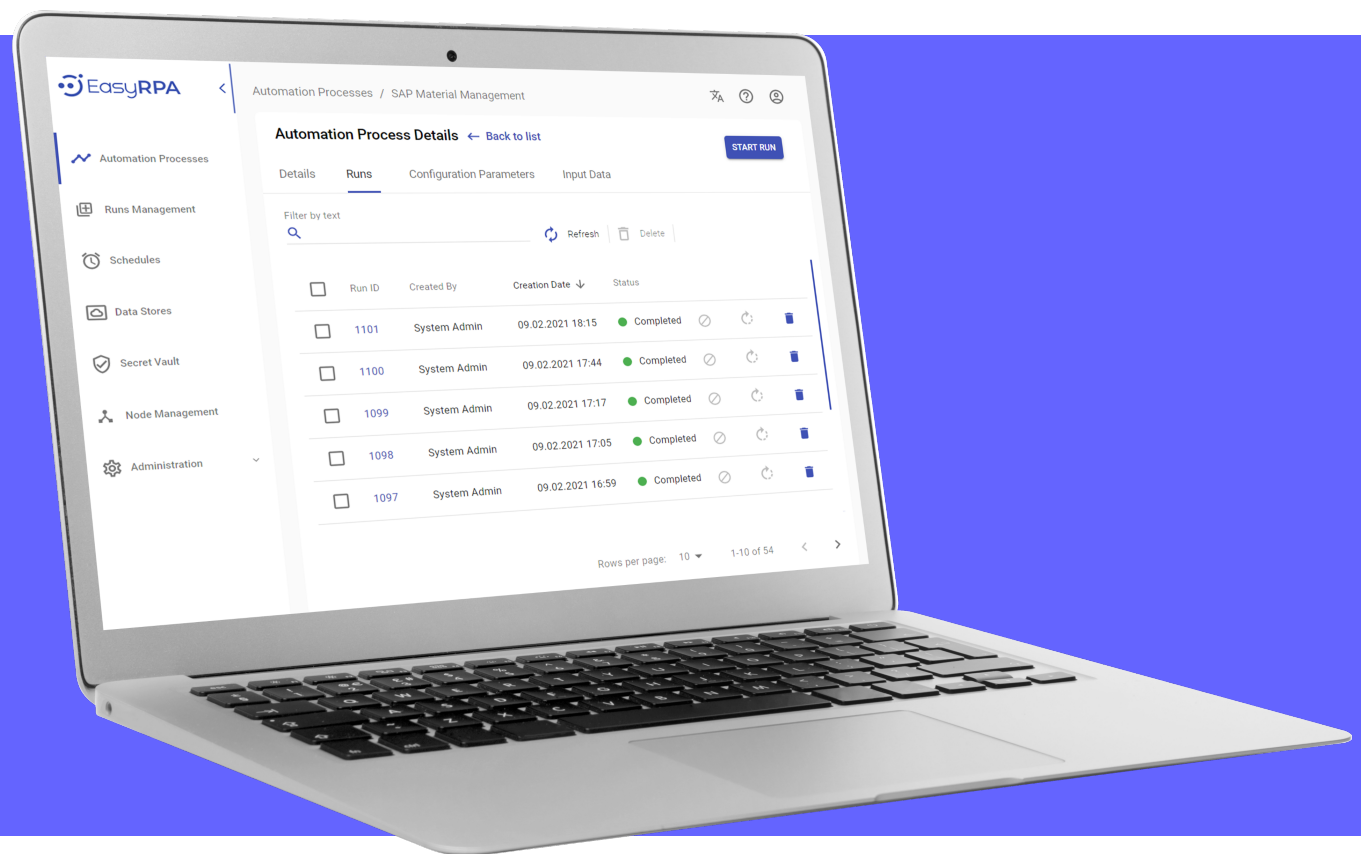


EasyRPA Platform Review



Platform components:

- Control Server
- Node Agent software
- RPA Bots Samples Library
- Automation Process Development Framework

Automation Process

is a Java package, containing all required code and libraries to execute automation business logic using EasyRPA

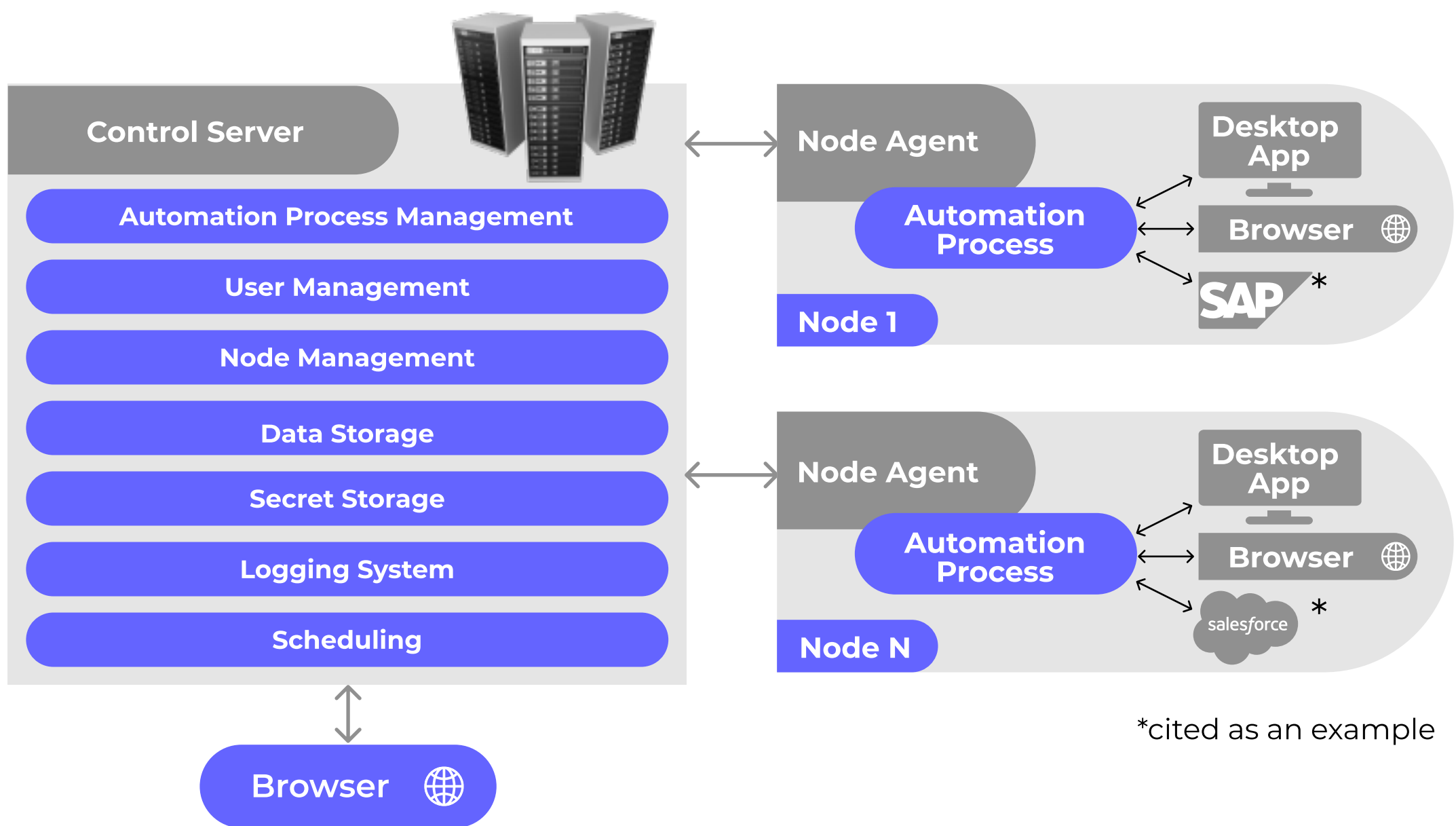
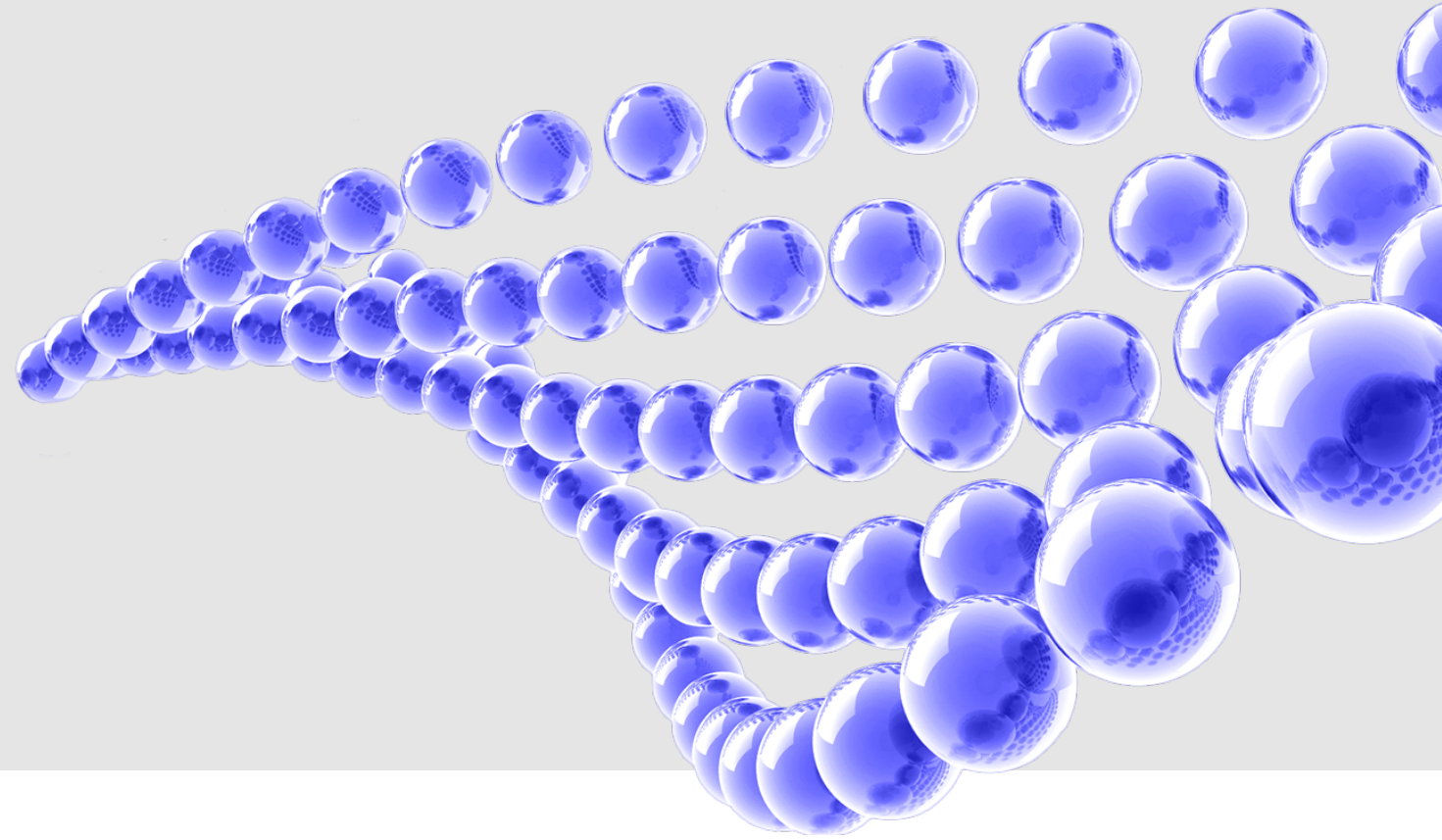
EasyRPA Control Server

centrally manages automation process execution, access control and collaboration, workforce

Control Server features:

- Comprehensive workload management system
- Human-in-the-Loop capability
- OCR/ML Support
- Containerization and Scalability
- User activity audit logs
- Keep catalog of existing nodes
- Specify configuration parameters for automation process
- Keep catalog of existing automation processes
- Automation Process Scheduling
- Run, stop or resume automation process
- Review automation processes statuses and logs
- Manage Secrets & Protect Sensitive Data like credentials, API keys, and more
- Manage users and groups permissions

How EasyRPA Node Works



EasyRPA Node is in charge of:

- Getting the right version of automation process package
- Triggering of automation process based on command from the Control Server
- Secure transfer of services from the Control Server that are necessary for automation process
- Storing automation process logs on the Control Server